

DROPS Design®

Raspberry Kiss #raspberrykisscardigan



Knitted jacket with raglan in DROPS Belle. Piece is knitted top down with lace pattern. Size: S - XXXL

DROPS 202-6

DROPS design: Pattern vs-058

Yarn group B

SIZE:

S - M - L - XL - XXL - XXXL

MATERIALS:

DROPS BELLE from Garnstudio (belongs to yarn group B)

300-350-400-400-450-500 g colour no 11, old pink

KNITTING TENSION:

21 stitches in width and 28 rows vertically in stocking stitch = 10 x 10 cm.

NEEDLES:

DROPS DOUBLE POINTED NEEDLES SIZE 4 mm

DROPS CIRCULAR NEEDLE SIZE 4 mm, length 40 and 80 cm for stocking stitch.

DROPS DOUBLE POINTED NEEDLES SIZE 3 mm

DROPS CIRCULAR NEEDLE SIZE 3 mm, length 80 cm for rib.

Needle size is only a suggestion! If you have too many stitches on 10 cm switch to larger needles. If you have too few stitches on 10 cm switch to smaller needles.

DROPS MOTHER-OF-PEARL BUTTON Flower (pink), NO 616: 5 pieces for all sizes

EXPLANATION FOR THE PATTERN:

GARTER STITCH (back and forth):

Knit all rows.

1 ridge vertically = knit 2 rows.

PATTERN:

See diagrams A.1 to A.6. Choose diagram for your size (applies to A.1-A.2). Diagrams show all rows in pattern seen from the right side.

DECREASE TIP-1 (evenly):

To calculate how to decrease evenly, use the total number of stitches on row (e.g. 118 stitches), minus bands (e.g. 10 stitches) and divide the remaining stitches by number of decreases to be done (e.g. 3) = 36. In this example decrease by knitting every 35th and 36th stitch together.

DECREASE TIP-2 (applies to body and sleeves):

All decreases are done from the right side!

Decrease 1 stitch on each side of A.6 as follows: Work until 2 stitches remain before A.6 and knit 2 together, knit A.6, slip 1 stitch knitwise, knit 1, pass slipped stitch over stitch worked.

INCREASE TIP (evenly):

To calculate how to increase evenly, use the total number of stitches on row (e.g. 189 stitches), minus bands (e.g. 10 stitches) and divide the remaining stitches by number of increases to be done (e.g. 24) = 7.5. In this example increase by making 1 yarn over after alternately every 7th and 8th stitch. On next row (wrong side) work yarn overs twisted to avoid holes.

RAGLAN:

All increases are done from the right side.

Increase 1 stitch in each side of 3 knit stitches in every transition between front/back piece and sleeves (= 8

stitches increased on row). Increase 1 stitch by making 1 yarn over. On next row (wrong side) purl yarn overs twisted to avoid holes. Then work the new stitch in stocking stitch on sleeves and work pattern on front and back piece.

BUTTONHOLES:

Decrease for buttonholes on right band (when garment is worn). Decrease from right side when 3 stitches remain on row as follows: Make 1 yarn over, knit the next 2 stitches together, knit last stitch. On next row knit yarn over to make holes.

Decrease first buttonhole when rib in neck measures approx. 1½-2 cm. Then decrease the next 4 approx. 7-7-8-8-9-9 cm between each.

START THE PIECE HERE:

JACKET - SHORT OVERVIEW OF THE PIECE:

Worked back and forth on circular needle, top down. Work sleeves in the round on double pointed needles/a short circular needle, top down.

NECK EDGE:

Cast on 118-118-123-128-138-143 stitches on circular needle size 3 mm with Belle. Purl 1 row from wrong side. Then work rib as follows from right side: 5 band stitches in GARTER STITCH - read explanation above, (knit 3/purl 2) until 8 stitches remain on needle, knit 3, 5 band stitches in garter stitch. Continue back and forth like this until rib measures 2 cm - remember BUTTONHOLES - read explanation above. Knit 1 row while decreasing 3-3-2-7-1-6 stitches evenly - read DECREASE TIP-1 (evenly) = 115-115-121-121-137-137 stitches. Purl 1 row from wrong side (work the 5 band stitches in garter stitches).

YOKE:

Switch to circular needle size 4 mm. Work in PATTERN - read explanation above, as follows:

5 band stitches in garter stitch, knit 0-0-1-1-0-0, A.1 over the next 16-16-16-16-21-21 stitches, make 1 yarn over, knit 2, insert a marker thread here (= left front piece), knit 1, make 1 yarn over, knit 15, make 1 yarn over, knit 1, insert a marker thread here (= sleeve), knit 2, 1 yarn over, A.2 over the next 3-3-5-5-7-7 stitches, A.3a over the next 14-14-14-14-16-16 stitches, A.3b over the next 11-11-11-11-13-13 stitches, A.4 over the next 3-3-5-5-7-7 stitches, make 1 yarn over, knit 2, insert a marker thread here (= back piece), knit 1, make 1 yarn over, knit 15, make 1 yarn over, knit 1, insert a marker thread here (= sleeve), knit 2, make 1 yarn over, A.5 over the next 16-16-16-16-21-21 stitches, knit 0-0-1-1-0-0, 5 band stitches in garter stitch (= right front piece). 8 stitches have been increased for RAGLAN - read explanation above. Continue pattern back and forth like this and increase every other row 24-26-29-32-35-38 times in total = 307-323-353-377-417-441 stitches. REMEMBER THE KNITTING TENSION. When diagrams have been worked 1 time vertically, continue pattern the same way. When all increases for raglan are done, piece measures approx. 19-21-23-25-27-29 cm from cast-on edge and down mid front. Work next row as follows: NOTE: In size S and L divide the piece for sleeves and body at the marker threads. In size M, XL, XXL and XXXL work some of the stitches (= 1-2-1-3

stitches) on sleeves on to needle for body, so that the transition between body and sleeves are now longer at the marker threads. Work the first 47-50-53-58-64-69 stitches, slip the next 65-67-75-77-85-87 stitches on a stitch holder (= sleeve), cast on 8-10-12-12-12-14 new stitches on needle (= in the side under sleeve), work the next 83-89-97-107-119-129 stitches (= back piece), slip the next 65-67-75-77-85-87 stitches on a stitch holder (= sleeve), cast on 8-10-12-12-12-14 new stitches on needle (= in the side under sleeve), work the remaining 47-50-53-58-64-69 stitches on needle. NOW MEASURE PIECE FROM HERE!

BODY:

= 193-209-227-247-271-295 stitches. Work pattern A.6 (= 8 stitches) over the middle 8 stitches under sleeves, 5 band stitches in garter stitch in each side towards and work as many repetitions of pattern that will fit out towards each side (pattern should fit pattern on yoke!), work the remaining stitches in stocking stitch.

When piece measures 4 cm, decrease 1 stitch on each side of A.6 in each side - read DECREASE TIP-2 (= 4 stitches decreased) = 189-205-223-243-267-291 stitches. When piece measures 15 cm (adjust to finish after one whole lace pattern vertically and some rounds with stocking stitch), increase 24-28-35-40-46-47 stitches evenly - read INCREASE TIP = 213-233-258-283-313-338 stitches. Switch to circular needle size 3 mm. Work rib from right side as follows: 5 band stitches in garter stitch, (knit 3/purl 2) until 8 stitches remain on row, knit 3, 5 band stitches in garter stitch. When rib measures 2 cm, cast off with knit over knit and purl over purl. Make sure that the cast-off edge is not too tight. Use a larger needle size when casting off. Jacket measures approx. 40-42-44-46-48-50 cm from shoulder and down.

SLEEVE:

Slip the 65-67-75-77-85-87 stitches from stitch holder in one side back on a short circular needle/double pointed needles size 4 mm. Pick in addition up 1 stitch in each of the 8-10-12-12-12-14 stitches under sleeve = 73-77-87-89-97-101 stitches. Continue in the round with stocking stitch and work A.6 over the middle 8 stitches under sleeve. When piece measures 4-4-3-3-3-2 cm, decrease 2 stitches under sleeves - remember DECREASE TIP-2. Decrease in the different sizes as follows:

Size S: Decrease like this on alternately every 2 and 3 cm 11 times in total.

Size M: Decrease like this every 2 cm 12 times in total.

Size L: Decrease like this on every 1,5 cm 16 times in total.

Size XL: Decrease like this on every 1,5 cm 16 times in total.

Size XXL: Decrease like this every cm 19 times in total.

Size XXXL: Decrease like this every cm 20 times in total.

When all decreases on sleeve are done there are 51-53-55-57-59-61 stitches on round. Continue until sleeve measures 31-30-29-27-25-23 cm. Now increase 4-7-5-8-6-9 stitches evenly = 55-60-60-65-65-70 stitches. Switch to double pointed needles size 3 mm. Work rib (knit 3/purl 2) for 2 cm. Cast off stitches with knit over knit and purl over purl. Make sure that the cast-off edge is not too tight. Use a larger needle size when casting off. Sleeve measures approx. 33-32-31-29-27-25 cm. Work the other sleeve the same way.

ASSEMBLY:

Sew the buttons on to left band.

Diagram explanations

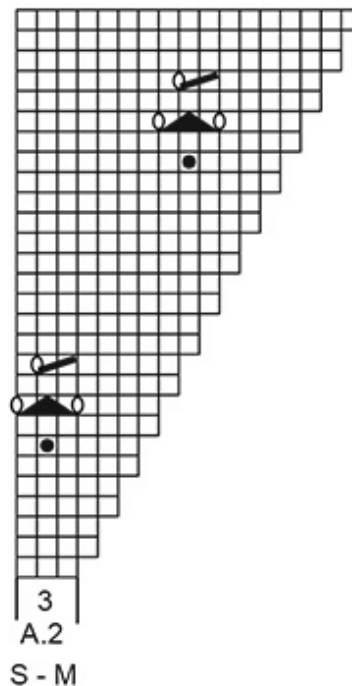
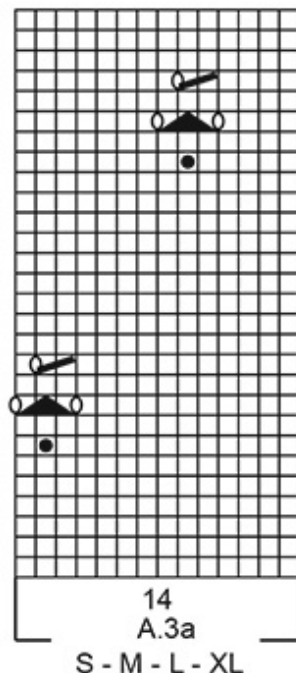
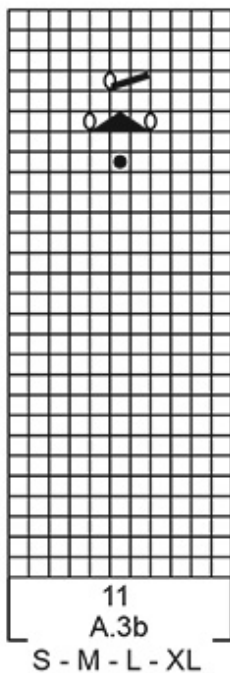
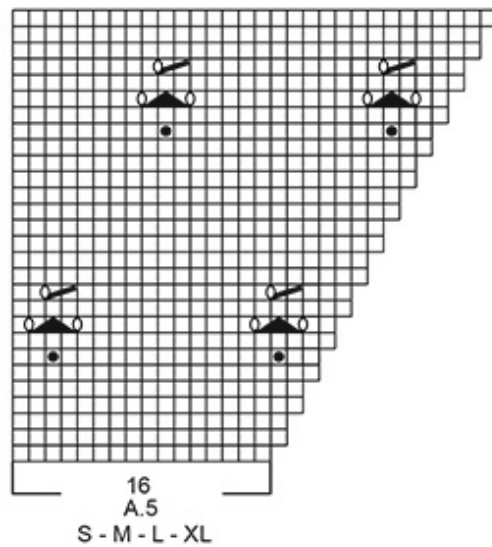
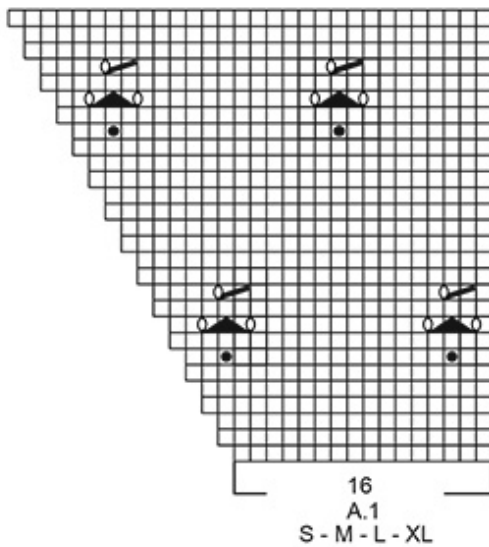
□ = knit from the right side, purl from the wrong side

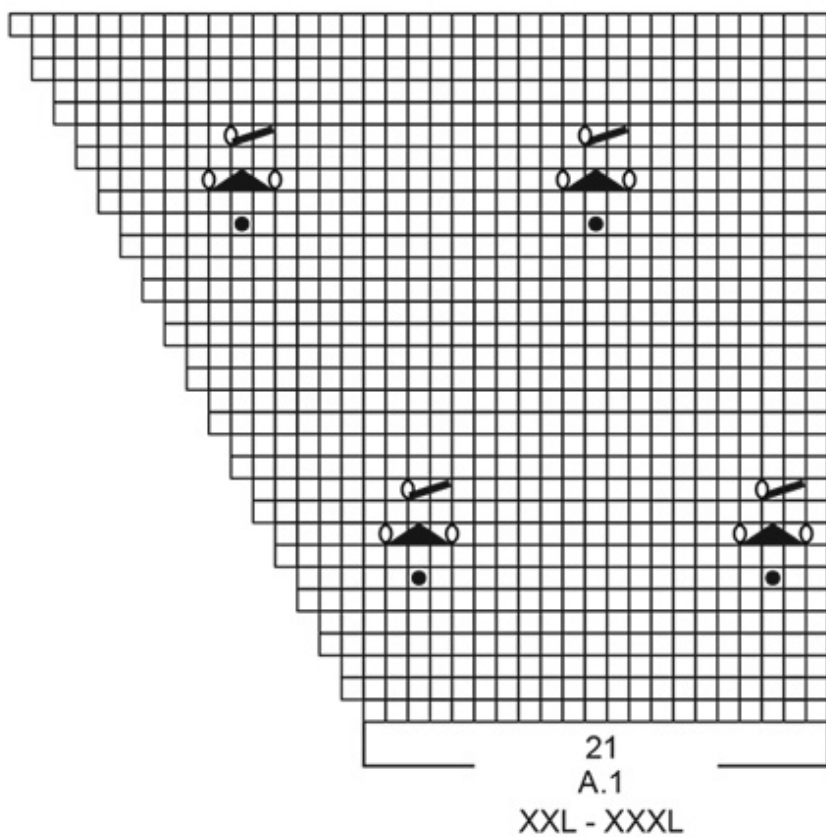
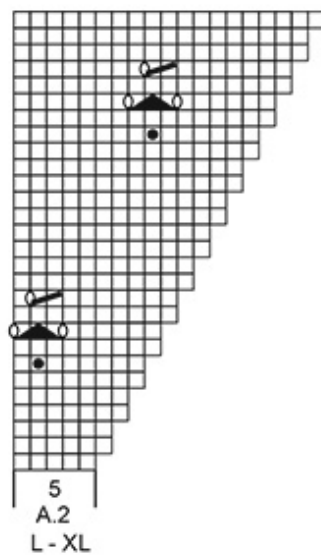
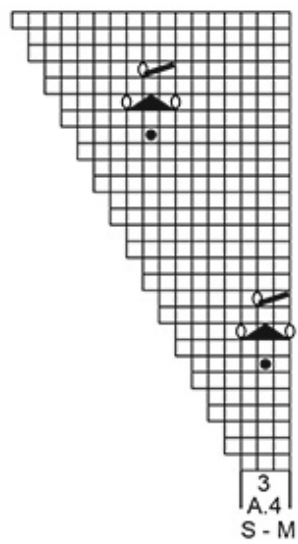
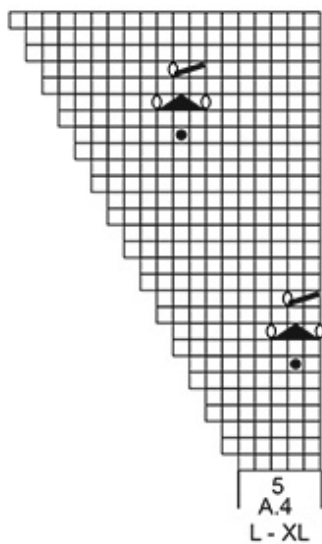
○ = between 2 stitches make 1 yarn over, on next row (from wrong side) purl yarn over to make hole

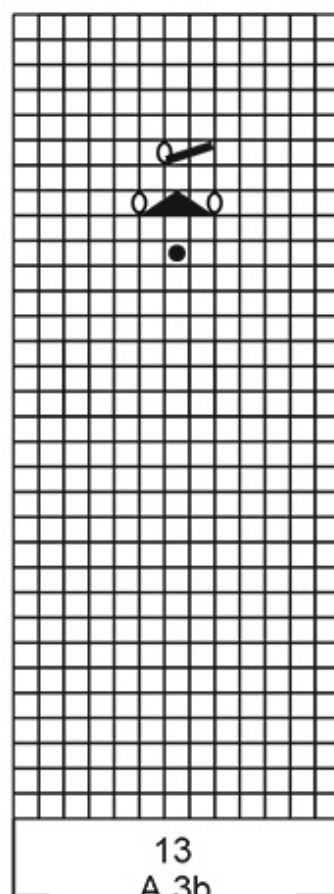
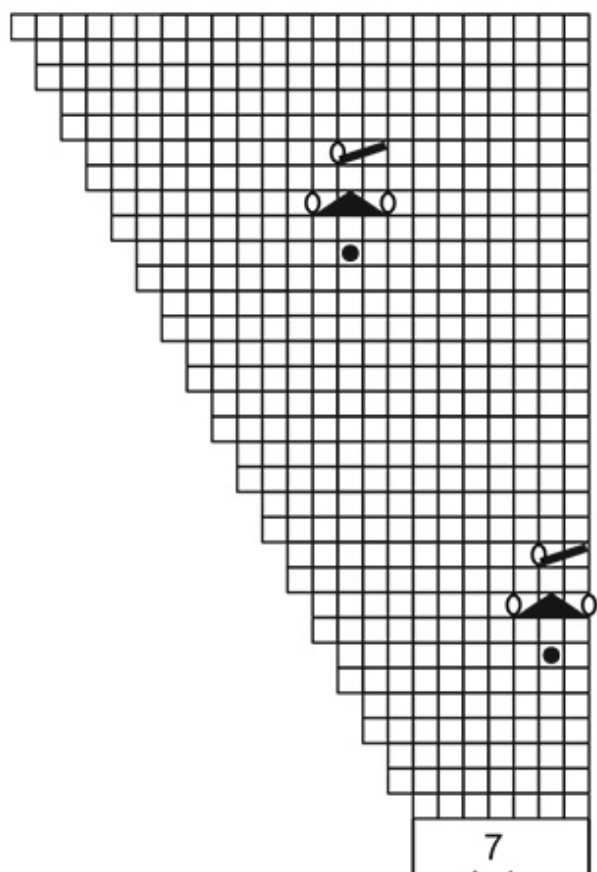
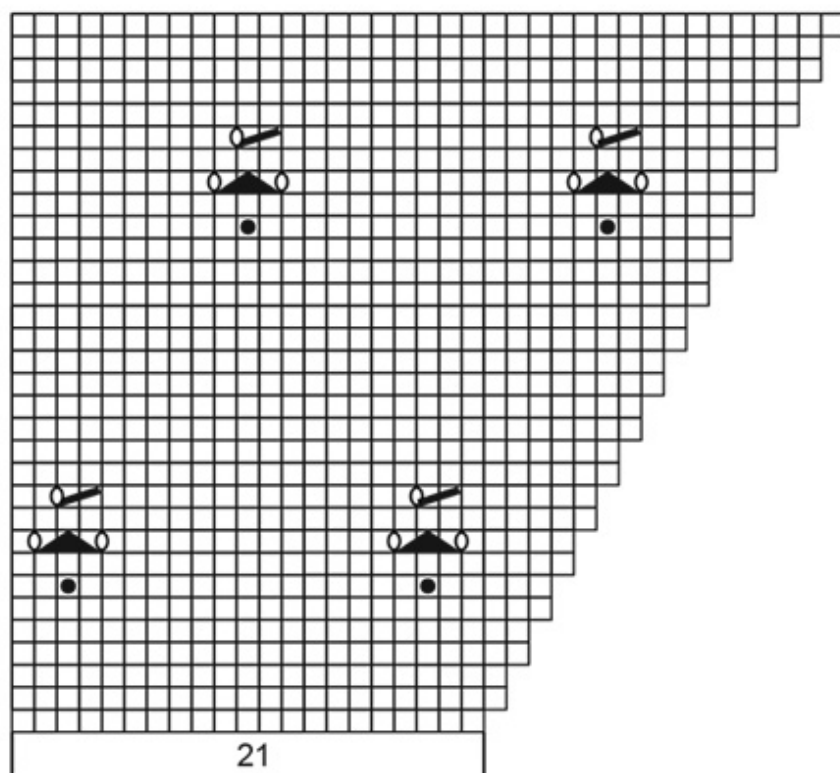
▤ = knit 2 together

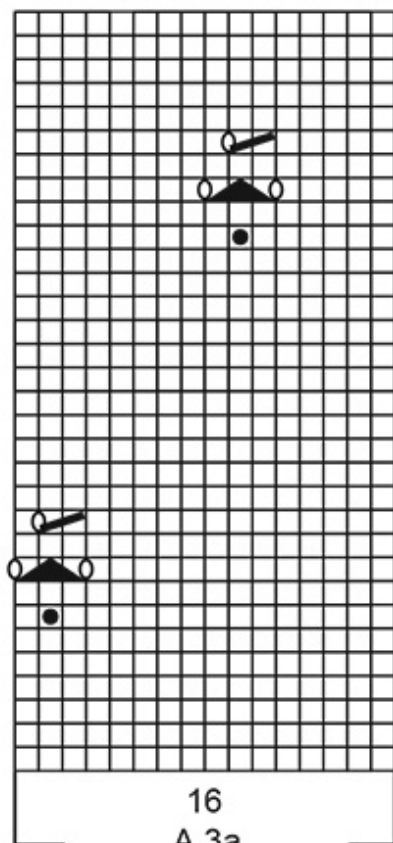
▲ = slip 1 stitch knitwise, knit 2 stitches together, pass slipped stitch over stitches worked together

■ = Knot: Knit 1 in front and back loop of same stitch until you have increased from 1 to 5 stitches. You now have the 5 stitches on right needle. Pass 2nd stitch (the next to last stitch on right needle) over the outermost stitch, pass 3rd stitch over the outermost stitch, pass 4th stitch over the outermost stitch, pass 5th stitch over first stitch (= 1 knot).

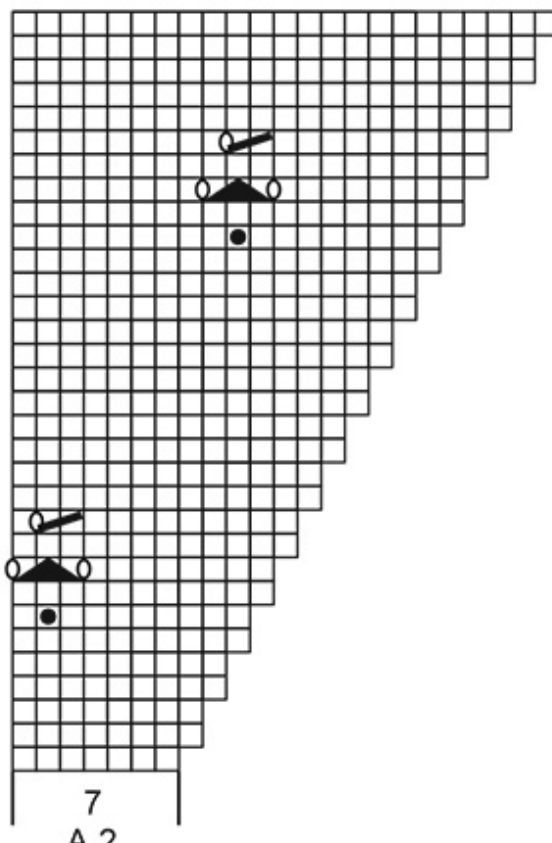








16
A.3a
XXL - XXXL



7
A.2
XXL - XXXL

