

DROPS Design®

Beach Ballet #beachballetwrap



Crocheted top in DROPS Belle. The piece is worked with wrap-around style, treble crochets and fans. The piece is worked top down. Sizes S - XXXL.

DROPS 199-47

DROPS Design: Pattern no vs-049

Yarn group B

SIZES:

S - M - L - XL - XXL - XXXL

MATERIALS:

DROPS BELLE from Garnstudio (belongs to yarn group B)

250-300-300-350-400-400 g colour 03, light beige

CROCHET TENSION:

18 treble crochets in width and 9 rows in height = 10 x 10 cm.

CROCHET HOOK:

DROPS CROCHET HOOK SIZE 4 MM.

Hook size is only a guide. If you get too many stitches on 10 cm, change to a larger hook size. If you get too few stitches on 10 cm, change to a smaller hook size.

EXPLANATIONS FOR THE PATTERN:

CROCHET INFORMATION:

First treble crochet at the beginning of each row is replaced by 3 chain stitches.

INCREASE TIP:

Increase 1 treble crochet by working 2 treble crochets in same treble crochet.

Increase 2 stitches by working as shown in A.4 on right front piece and A.5 on left front piece – NOTE: First double treble crochet at beginning of each row is replaced by 4 chain stitches.

DECREASE TIP (for sides):

Decrease 1 treble crochet by working 2 treble crochets together as follows: * Make 1 yarn over, insert hook through next stitch, pick up strand, 1 yarn over and pull strand through the first 2 loops on hook *, work from *-* 1 more time, make 1 yarn over and pull strand through all 3 loops on hook(= 1 treble crochet decreased).

PATTERN:

See diagrams A.1 to A.7. (A.6 shows how rounds start and finish).

INCREASE/DECREASE TIP (evenly spaced):

To work out how to decrease/increase evenly, count the total number of stitches, (e.g. 68 stitches) and divide by number of decreases/increases to be made (e.g. 4) = 17. In this example, decrease by working together each 16th and 17th stitch. When increasing work 2 treble crochets in each 17th treble crochet.

START THE PIECE HERE:

TOP - SHORT OVERVIEW OF THE PIECE:

Front and back pieces are worked back and forth separately, top down. The pieces are sewn together, and then you work fans along the bottom edge. The sleeves are worked back and forth, top down as far as the armholes, and then worked in the round. A small decorative edge is worked along the front pieces/back

piece/neck. The top is wrapped around by placing the right front piece on top of the left front piece and then tying around the waist.

RIGHT FRONT PIECE:

Work 21-22-22-25-24-25 chain stitches with hook size 4 mm and Belle. Turn and work 1 treble crochet in the 4th chain stitch from the hook (= 2 treble crochets), work 1 treble crochet in each of the next 5-6-6-3-2-3 chain stitches, * skip 1 chain stitch, work 1 treble crochet in each of the next 5 chain stitches *, work from *- * to end of row = 17-18-18-20-19-20 treble crochets. Work a total of 6-7-8-6-7-6 rows with 1 treble crochet in each treble crochet – read CROCHET INFORMATION and REMEMBER THE CROCHET TENSION! Then increase to neck and armholes at the same time as follows:

NECK:

On the next row (= from the right side) start to increase for neck at the end of the row – read INCREASE TIP. Increase by 1 treble crochet a total of 2-3-3-0-1-1 times, then increase 2 stitches (as shown in A.4) a total of 19-19-20-26-26-29 times (= a total of 40-41-43-52-53-59 treble crochets increased for neck).

ARMHOLE:

When the piece measures 16-16-16-17-16-14 cm start to increase for armhole – read INCREASE TIP. Increase 1 treble crochet 0-1-1-1-0-1 time, then increase 2 stitches 0-1-2-3-5-7 times. At the end of the first row from the wrong side work 5-5-6-7-8-8 loose chain stitches (including 3 chain stitches to turn with) for the armhole (= a total of 3-6-9-12-16-21 treble crochets increased for armhole). The piece measures approx. 19-20-21-22-23-24 cm. Turn and work 1 treble crochet in the 4th chain stitch from the hook (= 2 treble crochets), work 1 treble crochet in each of the next 1-1-2-3-4-4 chain stitches and work to end of row as before.

On the next row decrease 1 treble crochet in the side (i.e. towards the armhole) – read DECREASE TIP. Decrease like this every 2nd row a total of 4 times (=4 treble crochets decreased), the increases for neck continue as before. When all the decreases (towards the side) and increases (for neck and armhole) are finished there are 56-61-66-80-84-96 treble crochets on the last row. The piece measures approx. 30-32-34-36-38-40 cm from the shoulder down. Cut and fasten strand.

LEFT FRONT PIECE:

Work 21-22-22-25-24-25 chain stitches with hook size 4 mm and Belle. Turn and work 1 treble crochet in the 4th chain stitch from the hook (= 2 treble crochets), work 1 treble crochet in each of the next 5-6-6-3-2-3 chain stitches, * skip 1 chain stitch, work 1 treble crochet in each of the next 5 chain stitches *, work from *- * to end of row = 17-18-18-20-19-20 treble crochets. Work a total of 6-7-8-6-7-6 rows with 1 treble crochet in each treble crochet – read CROCHET INFORMATION and REMEMBER THE CROCHET TENSION! Then increase to neck and armholes at the same time as follows:

NECK:

On the next row (= from the right side) start to increase for neck at the beginning of the row – remember INCREASE TIP. Increase by 1 treble crochet a total of 2-3-3-0-1-1 times, then increase 2 stitches (as shown in A.5) a total of 19-19-20-26-26-29 times (= a total of 40-41-43-52-53-59 treble crochets increased for neck).

ARMHOLE:

When the piece measures 16-16-16-17-16-14 cm start to increase for the armhole – read INCREASE TIP. Increase 1 treble crochet 0-1-1-1-0-1 time, then increase 2 stitches 0-1-2-3-5-7 times. At the end of the first row from the right side work 5-5-6-7-8-8 loose chain stitches (including 3 chain stitches to turn with) for the armhole (= a total of 3-6-9-12-16-21 treble crochets increased for the armhole). The piece measures approx.

19-20-21-22-23-24 cm. Turn and work 1 treble crochet in the 4th chain stitch from the hook (= 2 treble crochets), work 1 treble crochet in each of the next 1-1-2-3-4-4 chain stitches and work to end of row as before.

On the next row decrease 1 treble crochet in the side (i.e. towards the armhole) – remember DECREASE TIP. Decrease like this every 2nd row a total of 4 times (=4 treble crochets decreased), the increases for neck continue as before. When all the decreases (towards the side) and increases (for neck and armhole) are finished there are 56-61-66-80-84-96 treble crochets on the last row. The piece measures approx. 30-32-34-36-38-40 cm from the shoulder down. Cut and fasten strand.

BACK PIECE:

RIGHT SHOULDER:

Work 21-22-22-25-24-25 chain stitches with hook size 4 mm and Belle. Turn and work first row from wrong side as follows: work 1 treble crochet in 4th chain stitch from hook (= 2 treble crochets), then work 1 treble crochet in each of the next 5-6-6-3-2-3 chains, * skip 1 chain stitch, crochet 1 treble crochet in each of the next 5 chain stitches*, repeat from *-* to end of row = 17-18-18-20-19-20 treble crochets. Cut the strand and put aside

LEFT SHOULDER:

Work 21-22-22-25-24-25 chain stitches with hook size 4 mm and Belle. Turn and work first row from wrong side as follows: 1 treble crochet in 4th chain stitch from the hook (= 2 treble crochets), work 1 treble crochet in each of the next 5-6-6-3-2-3 chain stitches, * skip 1 chain stitch, work 1 treble crochet in each of the next 5 chain stitches *, work from *-* to end of row = 17-18-18-20-19-20 treble crochets. On the next row (from right side), crochet 1 treble crochet in each treble crochet until 1 treble crochet remains and work 2 treble crochets in the last treble crochet (towards the neck = 18-19-19-21-20-21 treble crochets for left shoulder. Then crochet loosely 30-30-32-32-34-34 chain stitches for neck, take right shoulder and starting from right side, crochet 1 treble crochet in each of the next 16-17-17-19-18-19 treble crochets (= 18-19-19-21-20-21 treble crochets for right shoulder).

BACK PIECE:

Start on left shoulder (from wrong side) and work 1 treble crochet in each of the first 18-19-19-21-20-21 treble crochets, work 1 treble crochet in each of the 30-30-32-32-34-34 chain stitches in the neck and 1 treble crochet in each of the 18-19-19-21-20-21 treble crochets on right shoulder = 66-68-70-72-74-76 treble crochets.

Work 1 treble crochet in each treble crochet until the piece measures 16-16-16-17-16-14 cm. Now start to increase for the armholes on each side of the piece as follows: Increase 1 treble crochet 0-1-1-1-0-1 times, then 2 treble crochets 0-1-2-3-5-7 times = 66-74-80-86-94-106 treble crochets. Cut the strand.

Work the next row as follows: Work 3-3-4-5-6-6 loose chain stitches for the armhole, 1 treble crochet in each treble crochet and finish with 5-5-6-7-8-8 loose chain stitches (including 3 chain stitches to turn with) for the armhole = 72-80-88-96-106-118 stitches. Turn and work 1 treble crochet in 4th chain stitch from hook (= 2 treble crochets), work 1 treble crochet in each of the next 1-1-2-3-4-4 chain stitches, 1 treble crochet in each treble crochet and 1 treble crochet in each of the 3-3-4-5-6-6 last chain stitches = 72-80-88-96-106-118 treble crochets.

On the next row decrease 1 treble crochet on each side of the piece – remember DECREASE TIP. Decrease like this every 2nd row a total of 4 times = 64-72-80-88-98-110 treble crochets. Continue working until you

have the same number of rows as on the front pieces, i.e. the piece measures approx. 30-32-34-36-38-40 cm from the shoulder down. Cut and fasten strand.

ASSEMBLY:

Sew shoulder seams and side seams - sew in outermost loop of outermost stitch so the seam is flat.

FAN-EDGE (bottom edge):

= 176-194-212-248-266-302 treble crochets on last row (both front and back pieces).

Start on right front piece from the wrong side and work as follows: Work A.1 over the first 4 treble crochets, A.2 until there is 1 treble crochet left (= 19-21-23-27-29-33 repeats of 9 treble crochets) and finish with A.3 over the last treble crochet. When A.1 to A.3 have been completed, cut and fasten the strand.

DECORATIVE EDGE (along front pieces and back piece/neck):

Start at bottom of tip on right front piece from the right side and fasten the strand with 1 slip stitch in the first stitch. Work 1 double crochet around the first row, * 3 chain stitches, 1 double crochet around next row *, work from *-* along the whole front piece, neck and down the left front piece, finishing at the tip. Cut and fasten the strand.

SLEEVE:

The sleeve is worked top down, starting with the sleeve cap.

Work 42-48-44-45-42-46 chain stitches (including 3 chain stitches to turn with) with hook size 4 mm and Belle. Turn and work 1 treble crochet in 4th chain stitch from the hook (= 2 treble crochets), work 1 treble crochet in each of the next 2-1-4-5-2-6 chain stitches, * skip 1 chain stitch, work 1 treble crochet in each of the next 5 chain stitches *, work from *-* to end of row = 34-39-36-37-34-38 treble crochets. On the next row increase 2 treble crochets on each side of the piece (increase 2 treble crochets by working 3 treble crochets in same treble crochet). Increase like this a total of 7-7-8-8-9-9 times on each side = 62-67-68-69-70-74 treble crochets. Cut the strand.

Work 3-3-4-5-6-6 loose chain stitches for armhole, work 1 treble crochet in each of the 62-67-68-69-70-74 treble crochets and finish with 3-3-4-5-6-6 loose chain stitches for armhole. Then join the piece with 1 slip stitch in the first chain stitch = 68-73-76-79-82-86 stitches.

Now work in the round as follows: Work A.6 (shows how rounds start and finish), repeat A.7 to end of round (= 7-8-8-9-9-10 repeats of 9 treble crochets) – AT THE SAME TIME on the first round adjust the number of stitches by increasing/decreasing to 64-73-73-82-82-91 treble crochets – read INCREASE/DECREASE TIP. Continue until A.6 and A.7 have been completed. Cut and fasten strand. Work the other sleeve in the same way.

ASSEMBLY:

Sew in sleeves - sew in outermost loop of outermost stitch so the seam is flat.

TWISTED CORD:

Cut 2 strands measuring 6 metres of Belle. Twist them together until they begin to resist, fold double and they will continue to twist. Tie a knot in each end. Tie one end to the tip of the right front piece. Make 1 more cord in the same way and tie to the tip of the left piece.

Diagram explanations

* = row/round already worked! Start at arrow. In A.4/A.5 start on next row.

← = start here

— = chain stitch

⤿ = 3 chain stitches

 = 5 chain stitches

✕=double crochet in stitch

T = double crochet around chain-space

† = treble crochet in stitch

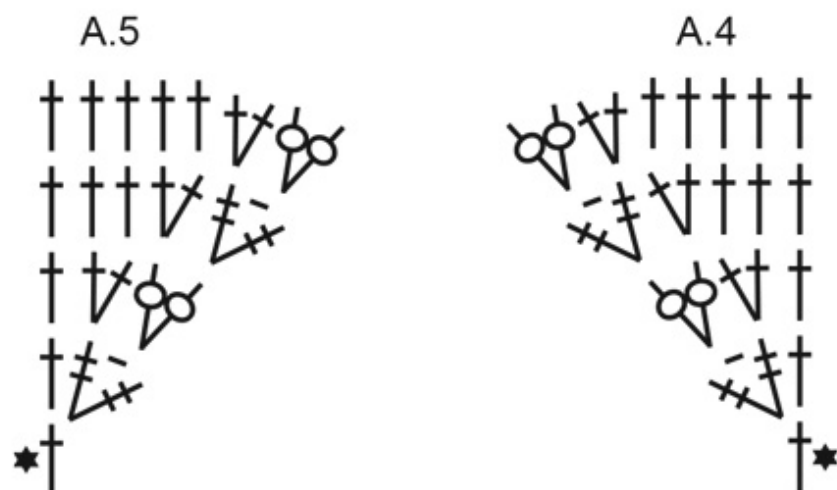
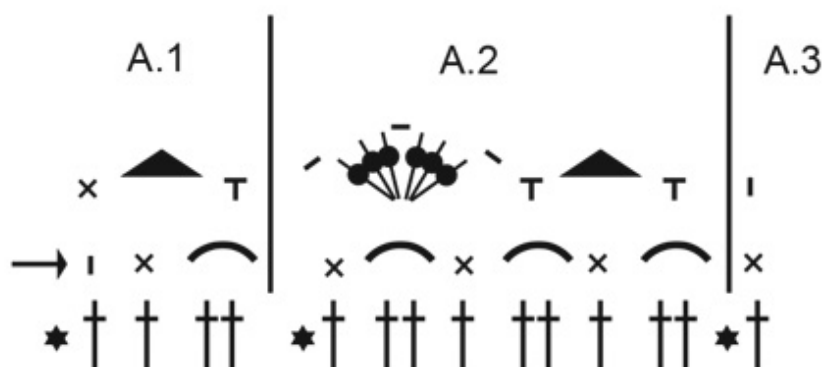
• = treble crochet around chain stitch/chain-space

‡ = double treble crochet in stitch

⦿ = double treble crochet around chain stitch

○ = round begins with 1 chain stitch and finishes with 1 slip stitch in first chain stitch at beginning of round

0 = round begins with 3 chain stitches and finishes with 1 slip stitch in 3rd chain stitch at beginning of round



A.7						A.6
		0				
		0				
		0				
		0				
		0				
		0				
		0				
		0				
		0				
		0				
		0				
		0				
		0				
		0				
		0				
		0				
		0				
		0				
		0				
		0				
		0				
		0				
		0				
		0				
		0				
		0				
		0				
		0				
		0				
		0				
		0				
		0				
		0				
		0				
		0				
		0				
		0				
		0				
		0				
		0				
		0				
		0				
		0				
		0				
		0				
		0				
		0				
		0				
		0				
		0				
		0				
		0				
		0				
		0				
		0				
		0				
		0				
		0				
		0				
		0				
		0				
		0				
		0				
		0				
		0				
		0				
		0				
		0				
		0				
		0				
		0				
		0				
		0				
		0				
		0				
		0				
		0				
		0				
		0				
		0				
		0				
		0				
		0				
		0				
		0				
		0				
		0				
		0				
		0				
		0				
		0				
		0				
		0				
		0				
		0				
		0				
		0				
		0				
		0				
		0				
		0				
		0				
		0				
		0				
		0				
		0				
		0				
		0				
		0				
		0				

